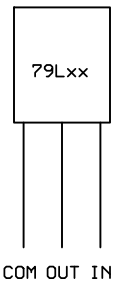
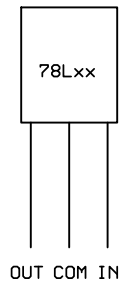
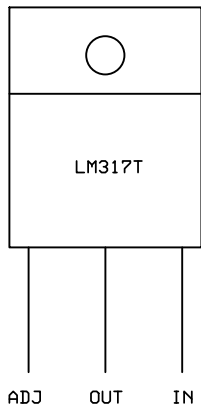
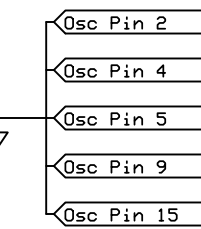
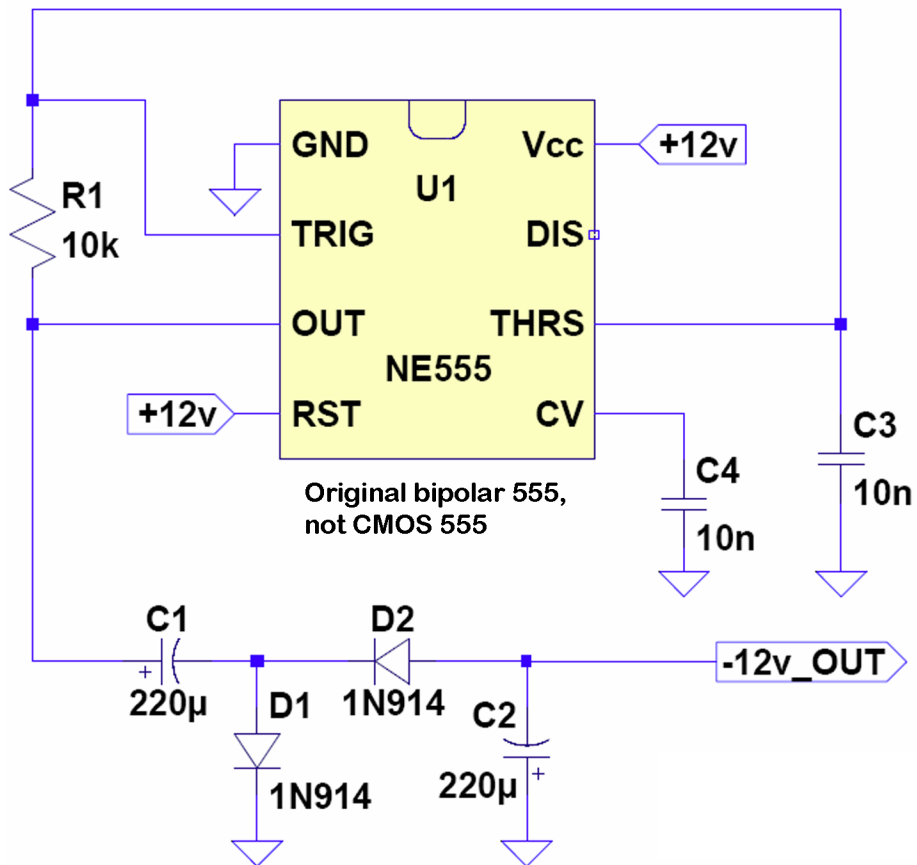


All 22uF capacitors solid tantalum

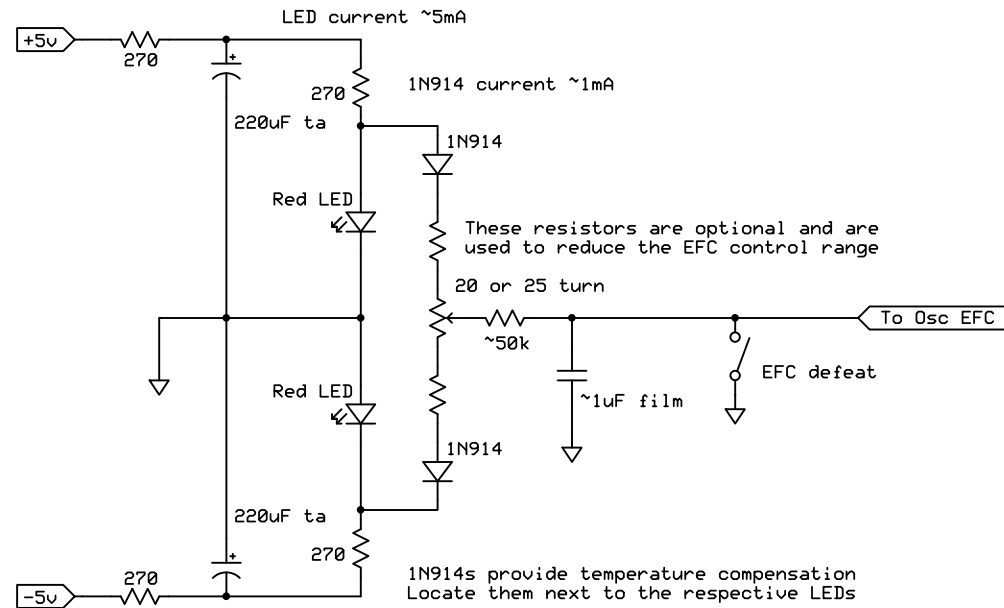


# Voltage Inverter



With C3 = 100n, oscillator runs at ~700Hz  
C3 can be reduced to 10n (~7kHz) or 1n (~70kHz)

# Alternate circuit for fine EFC adjustment with temperature compensation



Divider string voltage (between 1N914s) is ~ +/- 1.2v  
Total divider string resistance should be ~ 2k to 3k

HP 10811 EFC Supply

For Limited Range & Fine Adjustment